

El Salvador

④

Republic of El Salvador

Area: 21,000 km²
 Population: 6,130,000 (2008)
 Capital: San Salvador
 Ethnic composition: 85% are mixed indigenous and Spanish origin,
 5% indigenous, and 10% European origin
 Official language: Spanish
 Religion: Christianity



■ Deployment of Election Observers



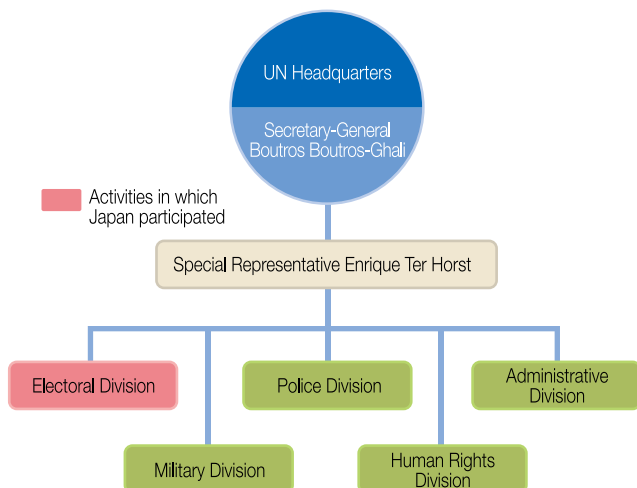
Election Observers

Japan dispatched 15 election observers—3 national government officials, 1 local government official, and 11 individuals from the private sector—to the UN Observer Mission in El Salvador (ONUSAL) to observe the presidential, legislative, and other elections held on March 20 and April 24, 1994. The Japanese observers were paired with observers from other countries. They monitored the preparation of polling stations, the electoral process, ballot collection, and ballot counting according to a checklist prepared by ONUSAL.

An election campaign scene



■ Outline of ONUSAL



A scene within the city



Observation at a polling station